

THE COBURN

*Now Known as the Kaya

FEATURES



2 STORY



2.5 BATHROOMS



3 BEDROOMS



2 CAR GARAGE



1485 SQ. FT.

COBURN - TRADITIONAL



COBURN - CRAFTSMAN



STONE INCLUDED



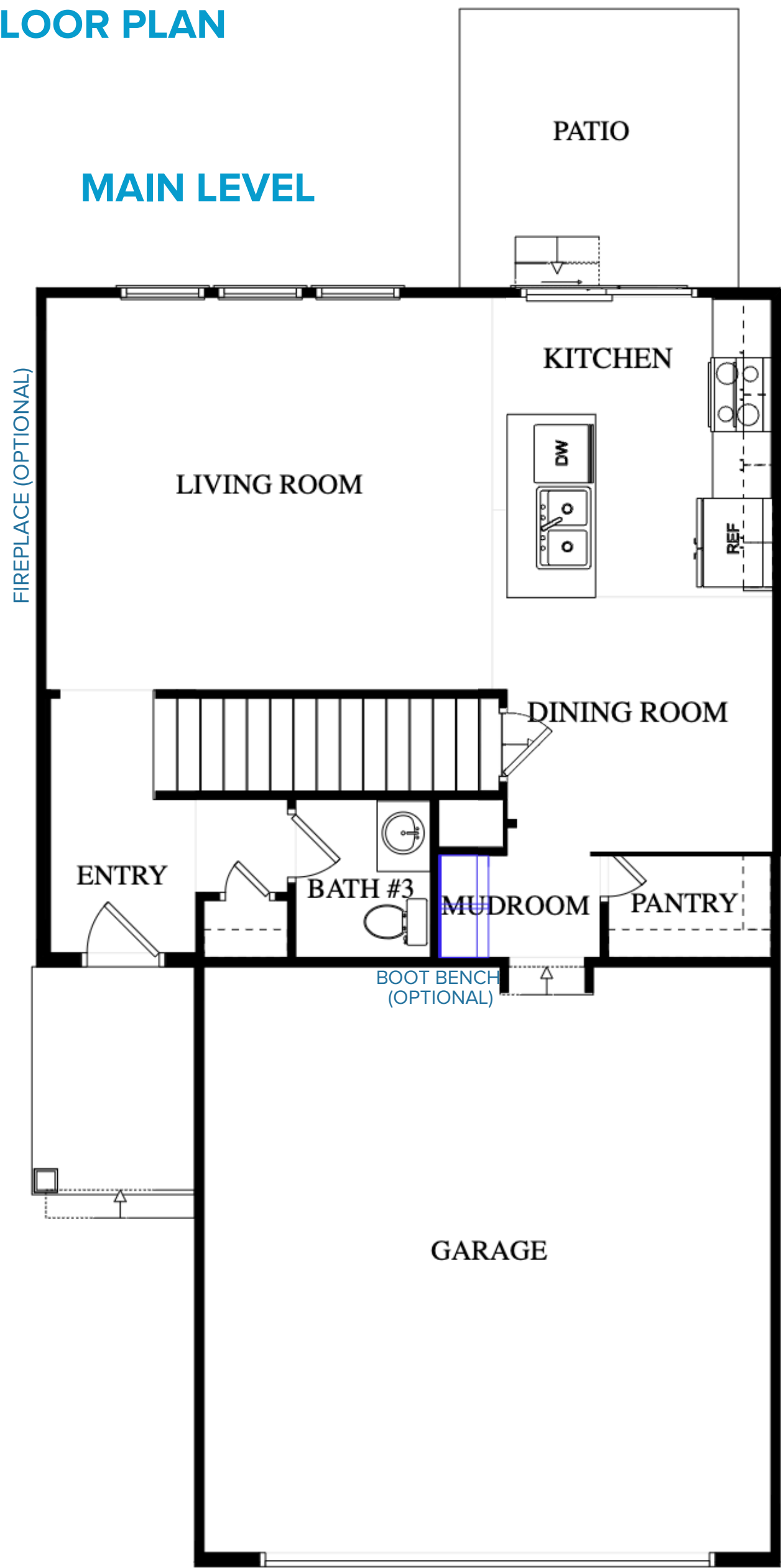
816.228.1188 | [ASHLARHOMESKC.COM](https://www.ashlarhomeskc.com)

Marketed by Ashlar Realty, LLC

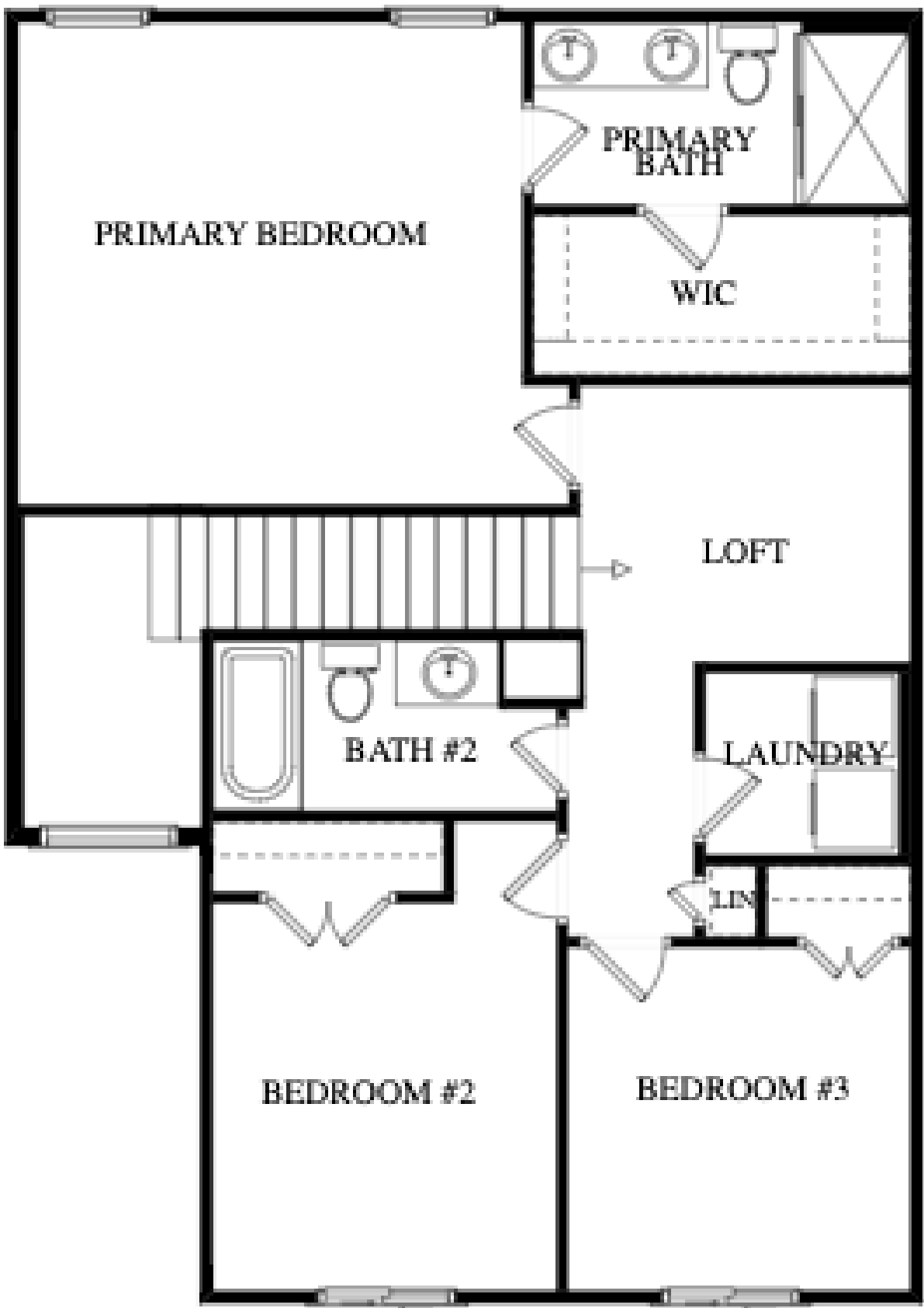
THE COBURN

*Now Known as the Kaya

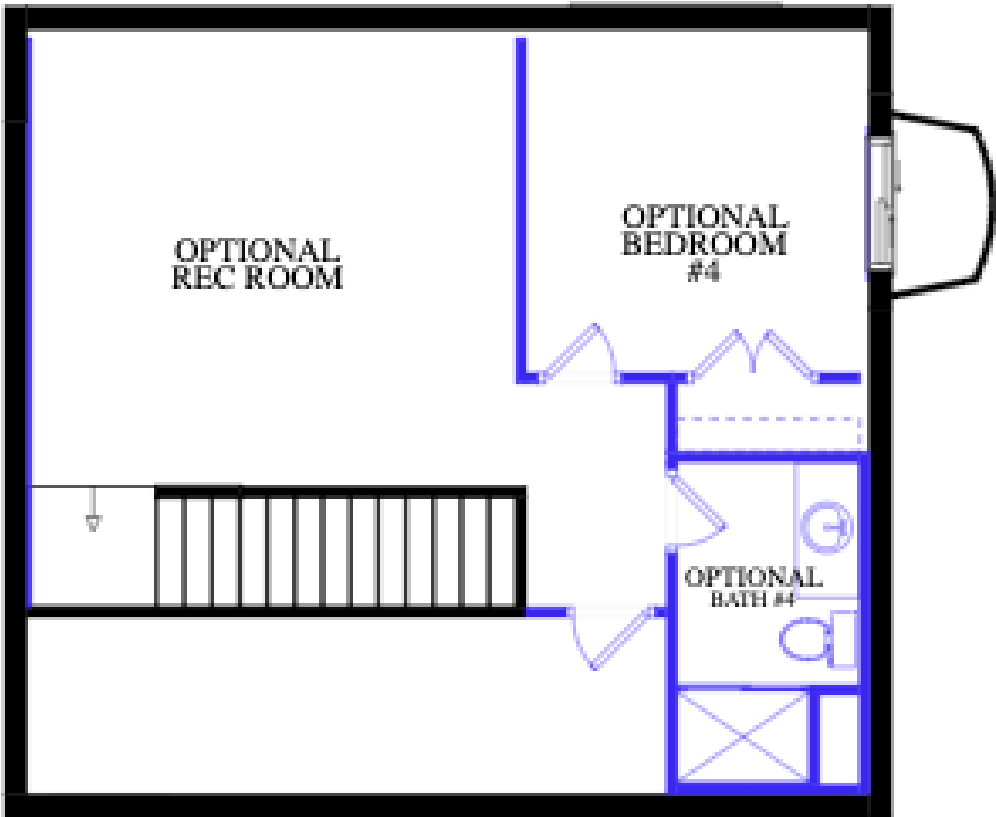
FLOOR PLAN



UPPER LEVEL



FINISHED BASEMENT (OPTIONAL)



816.228.1188 | ASHLARHOMESKC.COM

Marketed by Ashlar Realty, LLC